

MAYOR
Miguel A. Pulido
MAYOR PRO TEM
Juan Villegas
COUNCILMEMBERS
Phil Bacerra
Cecilia Iglesias
David Penaloza
Vicente Sarmiento
Jose Solorio



CITY MANAGER
Kristine Ridge
CITY ATTORNEY
Sonia R. Carvalho
CLERK OF THE COUNCIL
Daisy Gomez

CITY OF SANTA ANA
Planning and Building Agency
20 Civic Center Plaza • P.O. Box 1988
Santa Ana, California 92702
www.santa-ana.org

March 13, 2020

John Hyde
Toll Brothers Apartment Living
23422 Mill Creek Drive, Suite 105
Laguna Hills, CA 92653

Also via email to: jhyde@tollbrothers.com

Subject: Site Addresses for New Mixed-Use Project ("4th + Main/First American Title Co. Site") at 401 N. Main Street and 500 N. Bush Street in Santa Ana (formerly 114 E. Fifth Street and 121 E. Fifth Street, respectively)

Dear Mr. Hyde:

The City of Santa Ana Planning & Building Agency is the responsible agency for legal addressing within the City of Santa Ana's jurisdiction. This letter confirms the existence of the addresses for the mixed-use project at 401 N. Main Street and 500 N. Bush Street in Santa Ana (formerly 114 E. Fifth Street and 121 E. Fifth Street, respectively). The addresses and floor plans are contained within Exhibits A and B. Please note that property owner(s) information and/or Assessor Parcel Number(s) on the list may be subject to change or updates as received information is received by the City.

Please update your records accordingly. You may contact me by phone at (714) 647-5882 or by email at APezeshkpour@santa-ana.org if I can answer any questions.

Sincerely,

Ali Pezeshkpour, AICP
Senior Planner

Exhibit(s):
A. Address Lists
B. Floor Plans

AP:
M:\Letters, External\Address Letters\Addresses Toll Bros Fourth and Main.docx

SANTA ANA CITY COUNCIL

Miguel A. Pulido
Mayor
mpulido@santa-ana.org

Juan Villegas
Mayor Pro Tem, Ward 5
jvillegas@santa-ana.org

Vicente Sarmiento
Ward 1
vsarmiento@santa-ana.org

David Penaloza
Ward 2
dpenaloza@santa-ana.org

Jose Solorio
Ward 3
jsolorio@santa-ana.org

Phil Bacerra
Ward 4
pbacerra@santa-ana.org

Cecilia Iglesias
Ward 6
ciglesias@santa-ana.org

c:

Dale Feeney, United States Post Office
Lou Montalvo, United States Post Office
Postmaster Santa Ana, United States Post Office
Federal Express, Administration
Joe R. Lopez, Santa Ana Unified School District
Jonathan Hobbs, Orange County Fire Authority (OCFA) - jhobbs@santa-ana.org
Orange County Fire Authority – sourcenotification@ocfa.org
Mark Paszkiewicz, Registrar of Voters
Members, Board of Supervisors
Southern California Gas Company
Southern California Edison Company
Sherry McCall, County Assessor's Office
SAG, AT&T – SLICMAILBOX@att.com
UPS, Administration
City Manager's Office
Bill McGovern, Police Community Services Specialist
Boris Duran, Police Systems Manager
Karen Leyde, Police Communications Manager
Chris Hubbard, Police Systems Support Analyst
Monica Chairez, Customer Service Representative, Lead
Mirella Vargas, Customer Service Representative
Housing & Neighborhood Development Manager
Taig Higgins, Principal Civil Engineer
Jason Kwak, Acting Building Safety Manager
Evelyn LaRocca, Permit Supervisor
Kathy Hernandez, Permit Technician
Julie Amsden, Permit Technician
Vince Fregoso, Planning Manager
Verny Carvajal, Principal Planner
Alvaro Nunez, Code Enforcement Manager

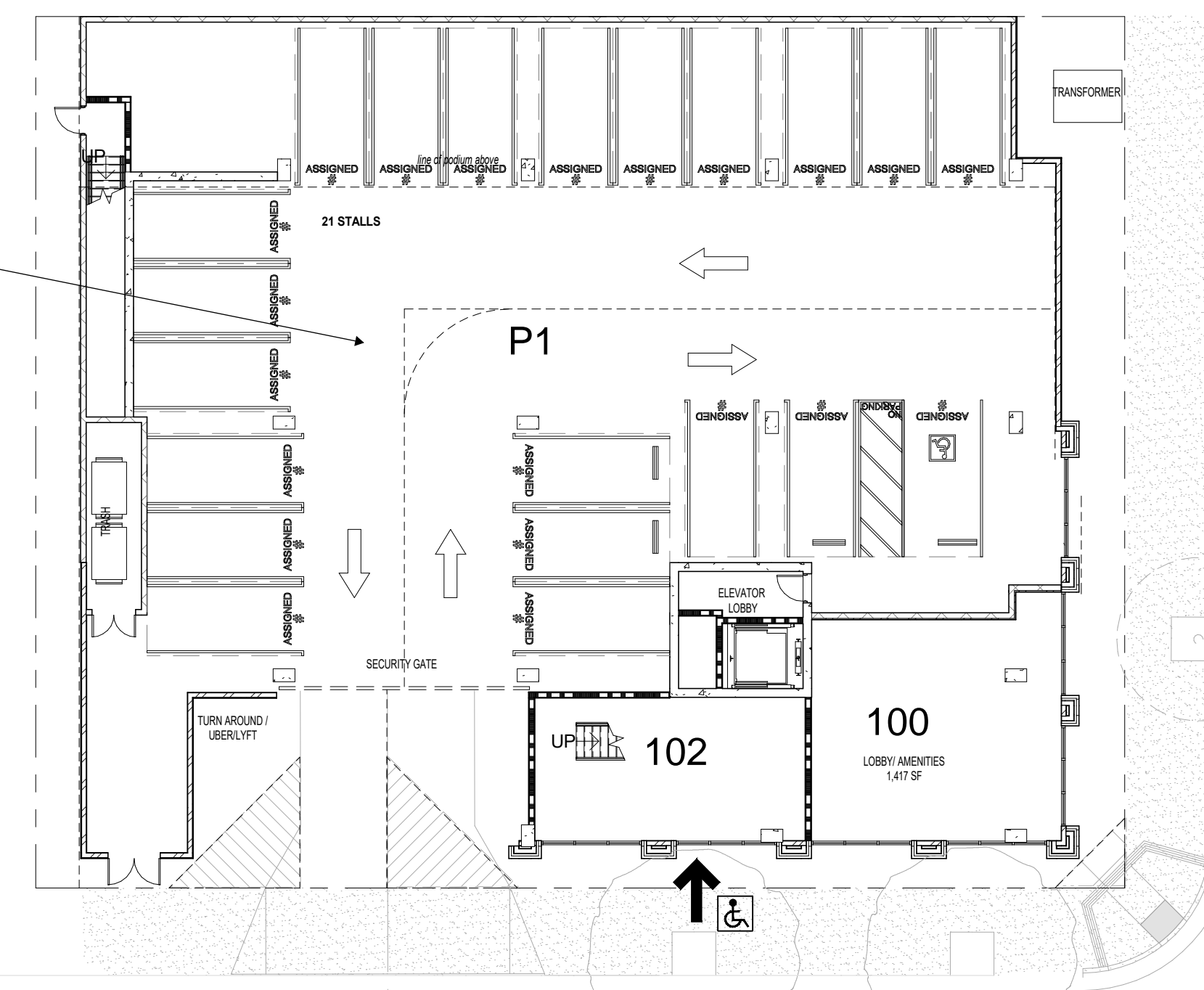
Primary Address**Unit****401 N. Main Street***Formerly 114 E. Fifth St.*

Basement Parking Unit	B1	Unit 329	Unit 440	Unit 548	Unit 704
Level 1 Parking Unit	P1	Unit 330	Unit 442	Unit 600	Unit 705
Level 2 Parking Unit	P2	Unit 332	Unit 444	Unit 602	Unit 706
Retail Unit	A	Unit 334	Unit 446	Unit 603	Unit 707
Retail Unit	B	Unit 336	Unit 448	Unit 604	Unit 708
Retail Unit	C	Unit 337	Unit 500	Unit 605	Unit 709
Retail Unit	D	Unit 338	Unit 502	Unit 606	Unit 710
Retail Unit	E	Unit 339	Unit 503	Unit 607	Unit 712
Retail Unit	F	Unit 340	Unit 504	Unit 608	Unit 713
Retail Unit	G	Unit 342	Unit 505	Unit 609	Unit 714
Retail Unit	H	Unit 344	Unit 506	Unit 610	Unit 715
Retail Unit	I	Unit 346	Unit 507	Unit 612	Unit 716
Leasing Unit	100	Unit 348	Unit 508	Unit 613	Unit 717
Unit	128	Unit 400	Unit 509	Unit 614	Unit 724
Unit	130	Unit 402	Unit 510	Unit 615	Unit 725
Unit	132	Unit 404	Unit 512	Unit 616	Unit 727
Unit	202	Unit 405	Unit 513	Unit 617	Unit 728
Unit	204	Unit 406	Unit 514	Unit 618	Unit 729
Unit	206	Unit 407	Unit 515	Unit 620	Unit 730
Unit	208	Unit 408	Unit 516	Unit 621	Unit 736
Unit	210	Unit 409	Unit 517	Unit 623	Unit 737
Unit	212	Unit 410	Unit 518	Unit 624	Unit 738
Unit	214	Unit 412	Unit 520	Unit 625	Unit 739
Unit	216	Unit 413	Unit 521	Unit 627	Unit 740
Unit	302	Unit 414	Unit 523	Unit 628	Unit 741
Unit	304	Unit 415	Unit 524	Unit 629	Unit 742
Unit	305	Unit 416	Unit 525	Unit 630	Unit 744
Unit	306	Unit 417	Unit 527	Unit 632	Unit 745
Unit	307	Unit 418	Unit 528	Unit 634	Unit 746
Unit	308	Unit 420	Unit 529	Unit 636	Unit 747
Unit	309	Unit 421	Unit 530	Unit 637	Unit 748
Unit	310	Unit 423	Unit 532	Unit 638	
Unit	312	Unit 424	Unit 534	Unit 639	
Unit	313	Unit 425	Unit 536	Unit 640	
Unit	314	Unit 427	Unit 537	Unit 641	
Unit	315	Unit 428	Unit 538	Unit 642	
Unit	316	Unit 429	Unit 539	Unit 644	
Unit	317	Unit 430	Unit 540	Unit 645	
Unit	318	Unit 432	Unit 541	Unit 646	
Unit	320	Unit 434	Unit 542	Unit 647	
Unit	324	Unit 436	Unit 544	Unit 648	
Unit	325	Unit 437	Unit 545	Unit 700	
Unit	327	Unit 438	Unit 546	Unit 702	
Unit	328	Unit 439	Unit 547	Unit 703	

Primary Address	Unit
<u>500 N. Bush Street</u>	
<i>Formerly 121 E. Fifth St.</i>	
Leasing/Amenity	100
Lobby	105
Unit	200
Unit	201
Unit	202
Unit	203
Unit	204
Unit	205
Unit	300
Unit	301
Unit	302
Unit	303
Unit	304
Unit	305
Unit	400
Unit	401
Unit	402
Unit	403
Unit	404
Unit	405
Unit	500
Unit	501
Unit	502
Unit	503
Unit	504
Unit	505

Parcel B: 500 N. Bush Street

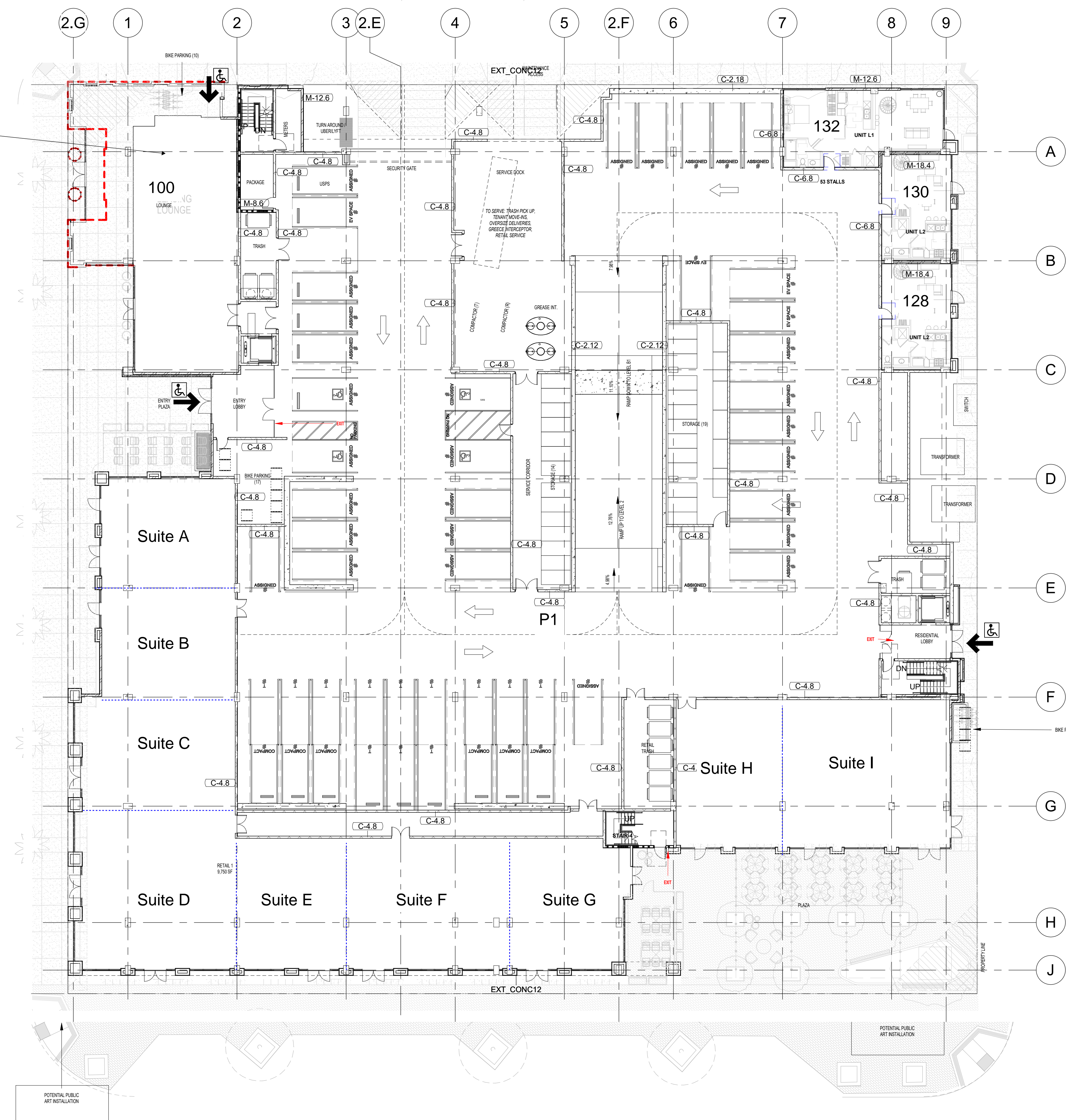
Parcel B



5th Street

Parcel A

Main Street



Bush Street

4th Street

LEGEND

- PROPERTY LINE
- ACCESSIBLE BUILDING ENTRANCES
- FLOOR
- ADDRESS SEQUENCE

LEVEL 1 OVERALL 1/16" = 1'-0" 1

NO.	DATE	REVISIONS

Toll Brothers
APARTMENT LIVING

PROJECT NAME
**4TH + MAIN
ADDRESS PLAN**

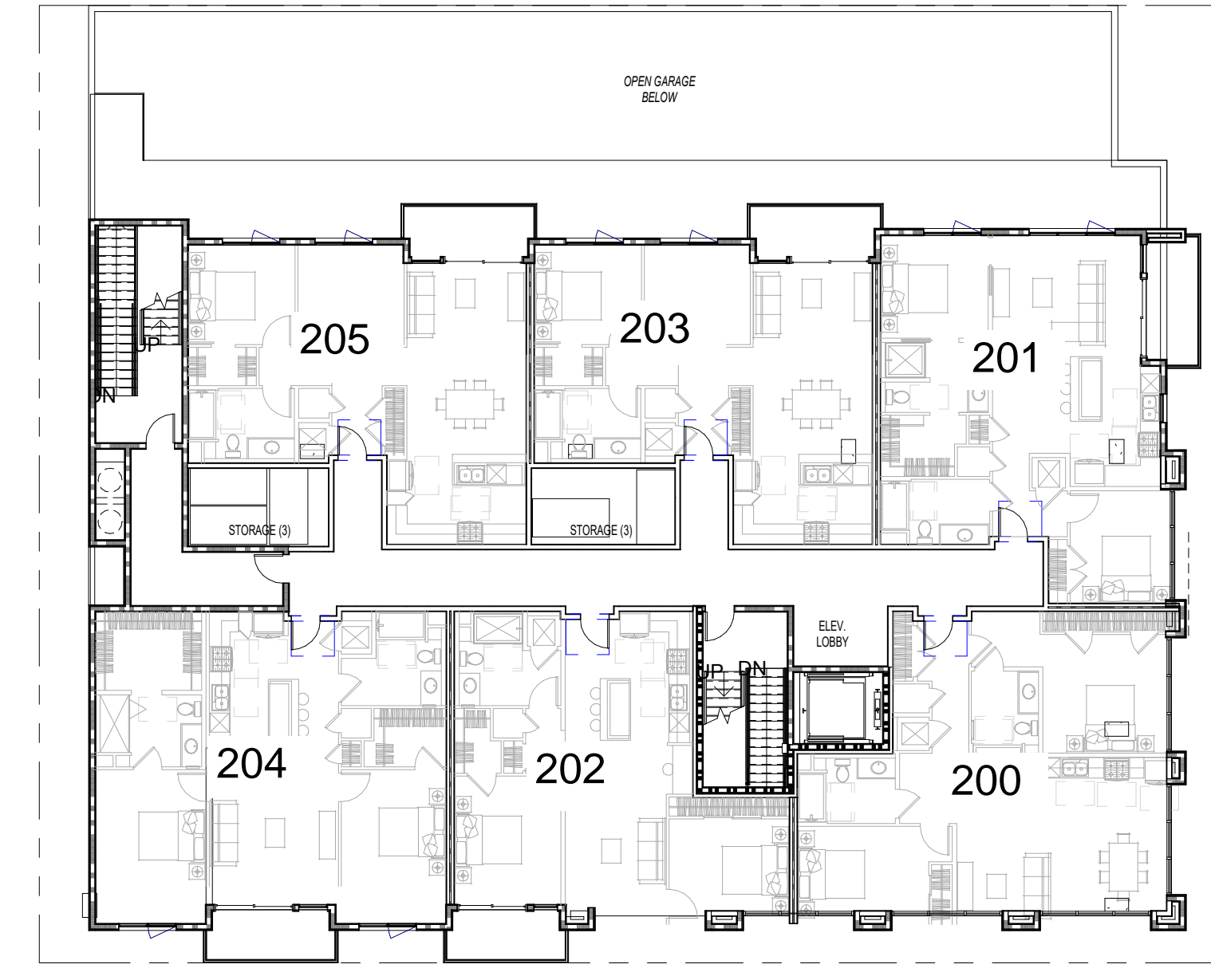
SHEET TITLE
LEVEL 1

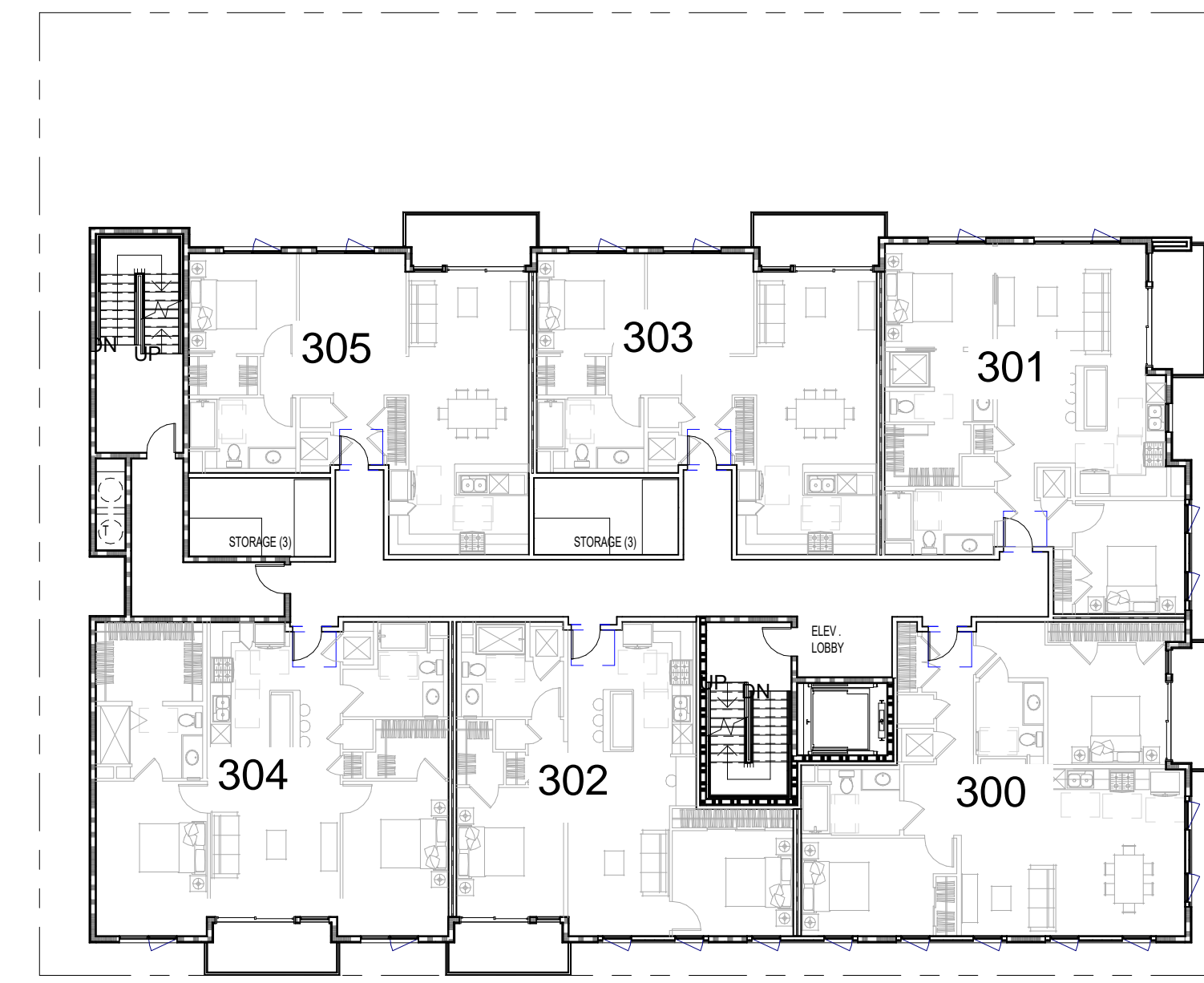
SHEET NUMBER
A-11.1.1

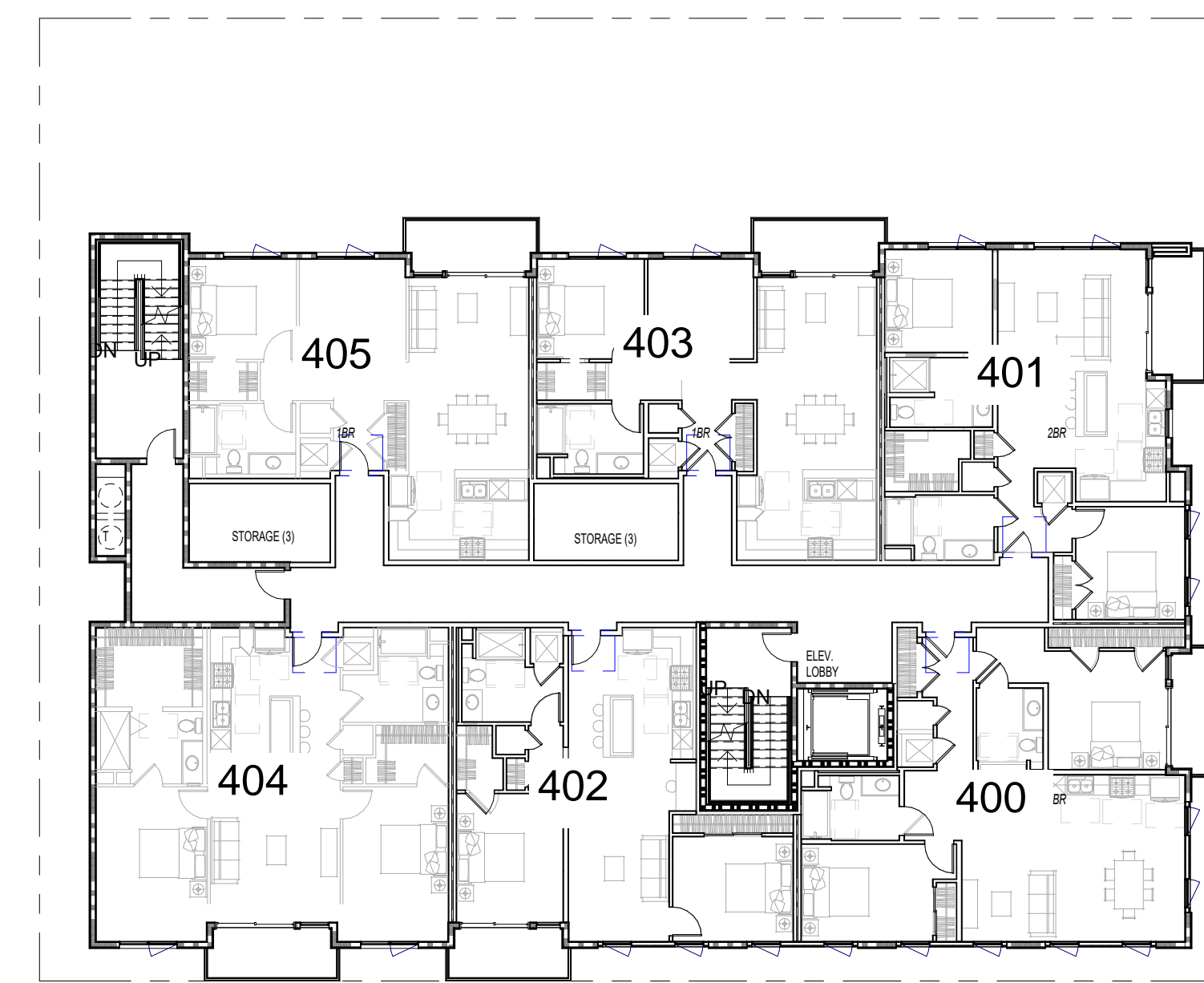
PROJECT NUMBER
2016-10149

MVE
PARTNERS

ADDRESS PLAN EXHIBIT







SHEET TITLE
LEVEL 4

SHEET NUMBER
A-11.1.4

PROJECT NUMBER
2016-10149

PROJECT NAME
4TH + MAIN

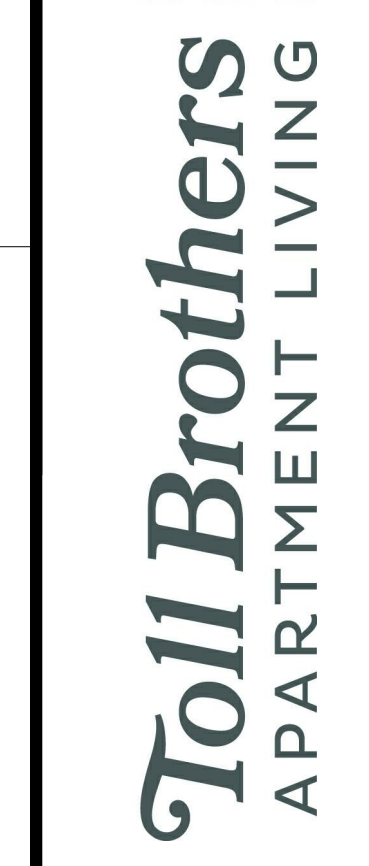
ENTER ADDRESS HERE

THIS DOCUMENT CONTAINS INFORMATION PROPRIETARY TO MVE PARTNERS, LLC AND IS INTENDED IN COMPLIANCE WITH THE APARTMENT LEASING ACT AND THE REAL ESTATE BROKERAGE ACT. IT IS NOT TO BE REPRODUCED OR TRANSMITTED IN ANY FORM OR BY ANY MEANS, ELECTRONIC OR MECHANICAL, INCLUDING PHOTOCOPYING, RECORDING, OR BY ANY INFORMATION STORAGE AND RETRIEVAL SYSTEM. © 2016 MVE PARTNERS, LLC. ALL RIGHTS RESERVED. 10/16/2016

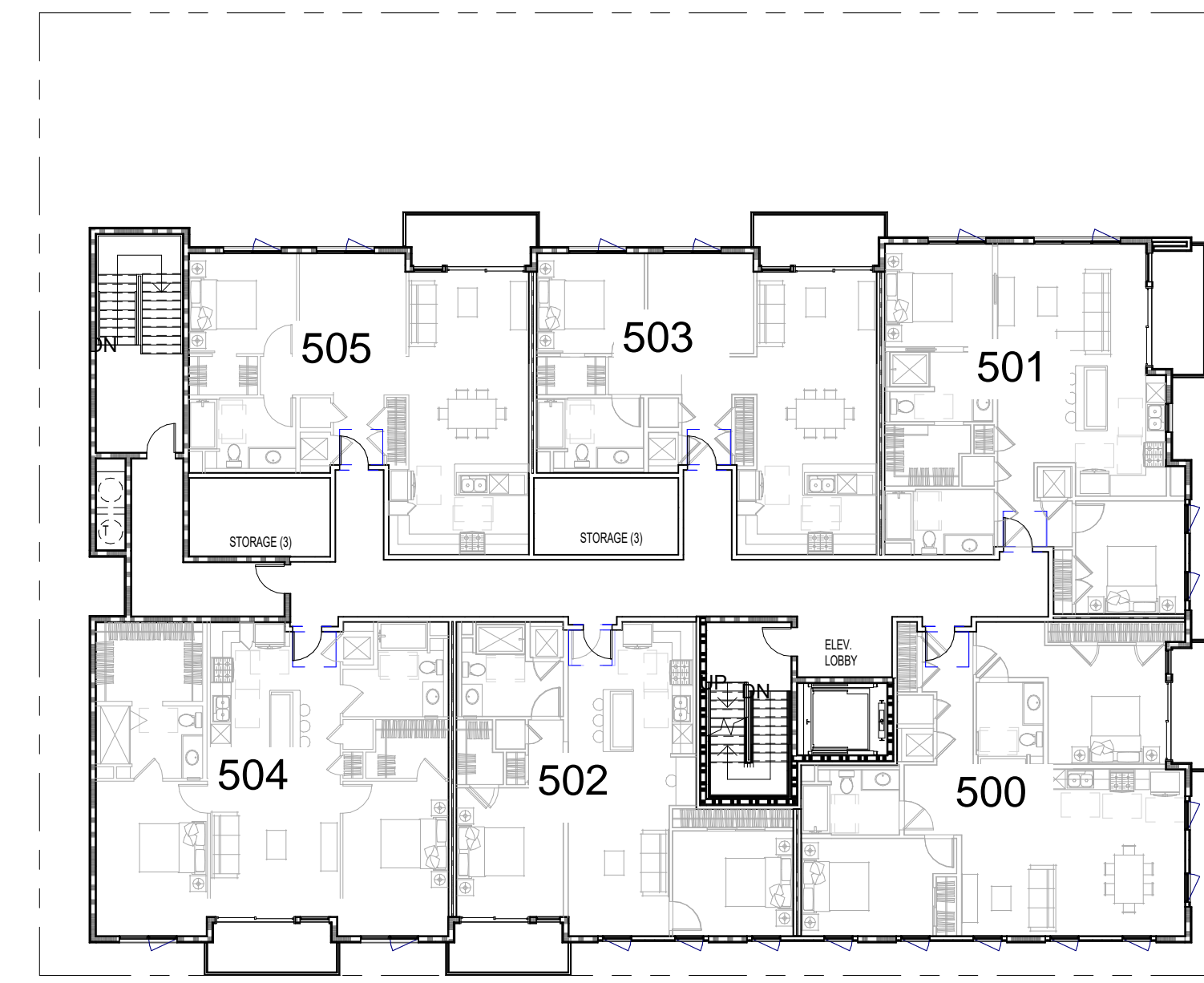
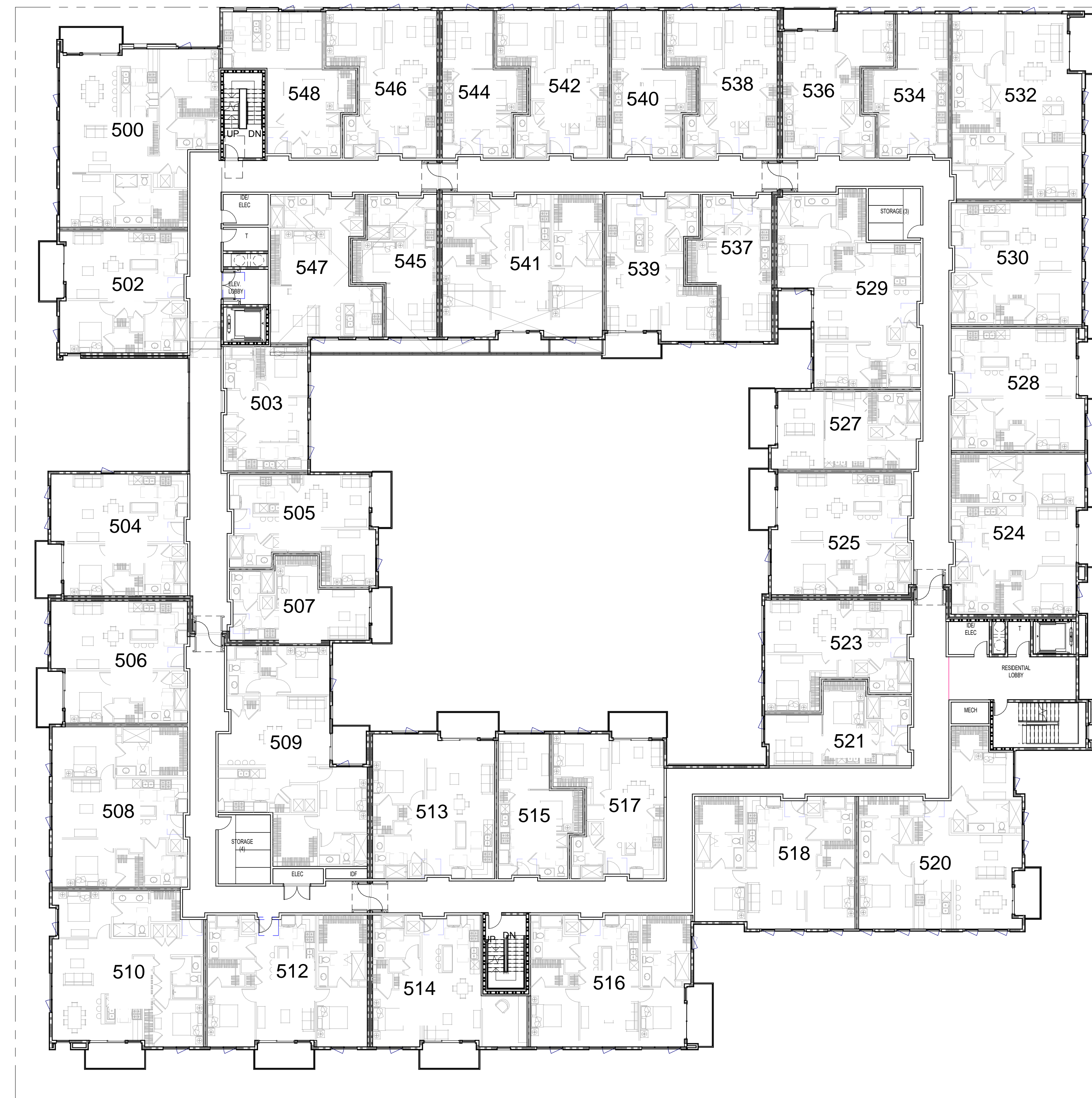


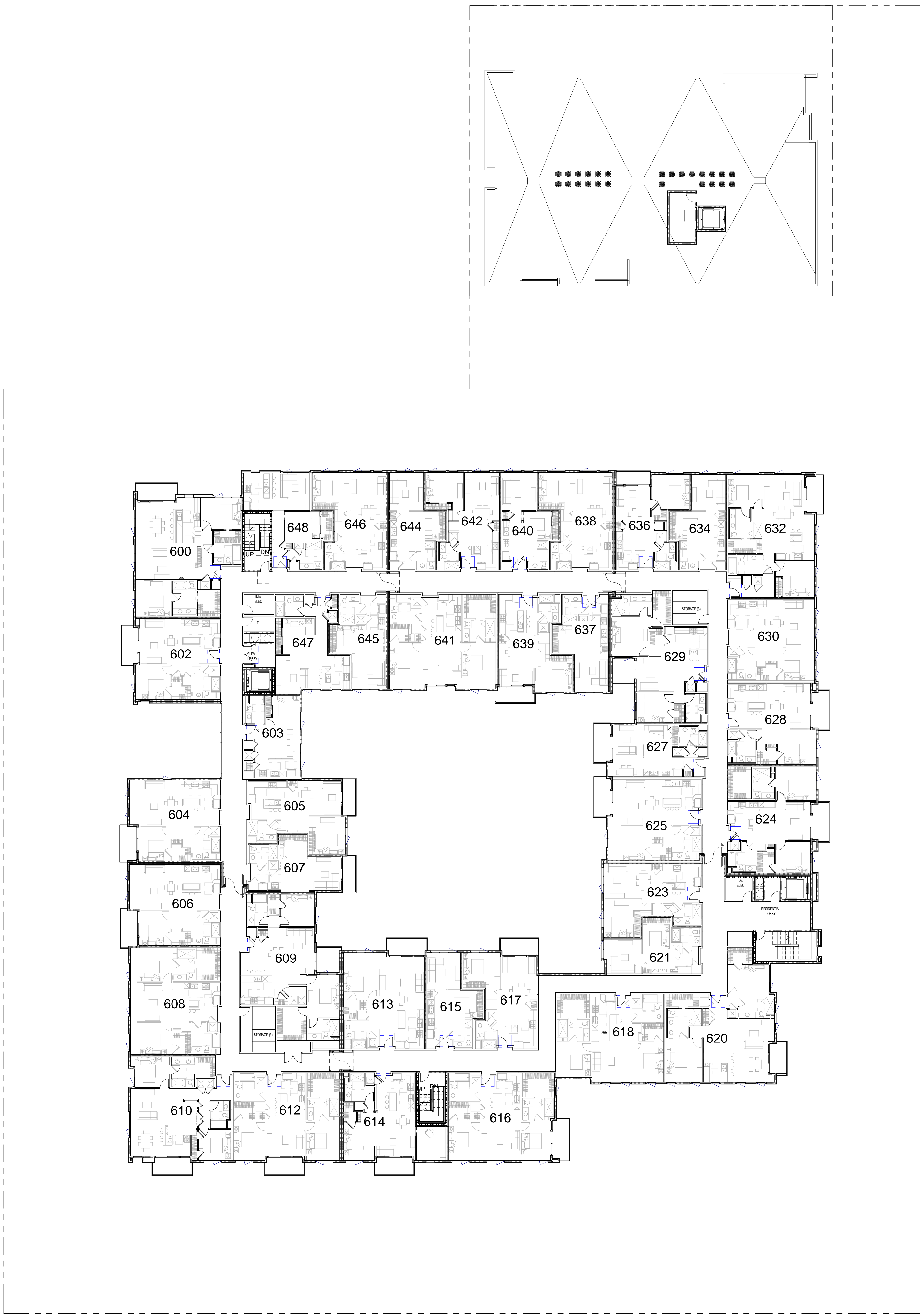
DRAFT

REVISIONS

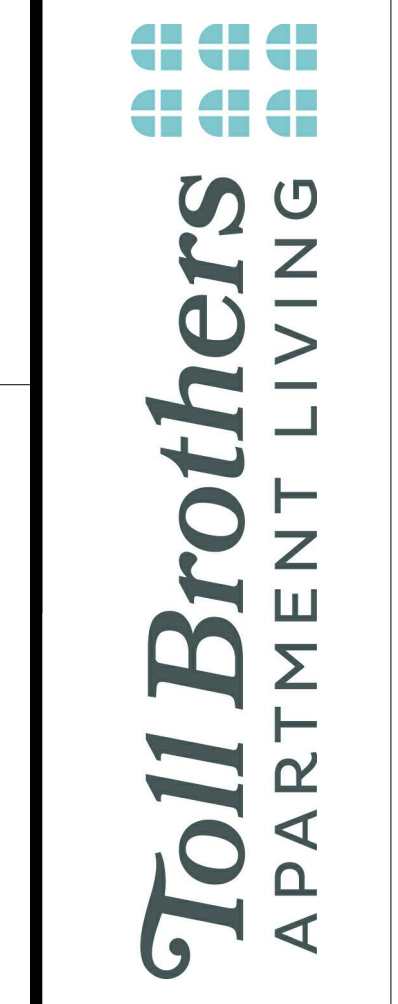


STAMP





NO.	DATE	REVISIONS



PROJECT NAME
4TH + MAIN

SHEET TITLE
LEVEL 6

SHEET NUMBER
A-11.1.6

PROJECT NUMBER
2016-10149



DRAFT

THIS DOCUMENT CONTAINS INFORMATION PROPRIETARY TO MVE, PARTNERS, LLC AND IS INTENDED IN CONFIDENCE FOR THE EXCLUSIVE USE OF THE CLIENT. IT IS NOT TO BE REPRODUCED, COPIED, OR DISTRIBUTED TO ANY OTHER PARTY WITHOUT THE WRITTEN CONSENT OF MVE, PARTNERS, LLC. © 2016 MVE, PARTNERS, LLC. ALL RIGHTS RESERVED.

Enter address here

PROJECT NAME

STAMP

