

P.M. 65 / 42

PCL. 1

A.C. PAVEMENT

ROW OF 15' HIGH, 8' ON CENTER, TREES, 3' SPREAD
N. 88° 44' 00" E

531.52'

PCL. 1

DH-3

P.M. 106 / 43

DH-4

PCL. 2

P.M.

A.C. PAVEMENT

N. 88° 44' 00" E

456.96'

N. 1° 00' 55" W

SUSAN STREET

ALTON AVENUE

UTILITIES PROVIDED BY:

WATER: CITY OF SANTA ANA (714) 834-4142
 SEWER: CITY OF SANTA ANA (714) 834-4142
 ELECTRIC: S.O. CALIF EDISON CO. (714) 835-3838
 GAS: S.O. CALIF GAS CO. (714) 834-3106
 TELEPHONE: PACIFIC TELEPHONE CO. (714) 835-0035
 STORM DRAIN: CITY OF SANTA ANA (714) 834-4152

LEGEND:

E.P. INDICATES EDGE OF PAVEMENT
 T.C. INDICATES TOP OF CURB
 F. INDICATES FLOW LINE
 T.R. INDICATES TOP OF RAIL

MONUMENT NOTE:

• INDICATES FOUND 2" T.P. W/TAG
 L.S. 3246 PER FM 106/43

EXPLANATION

● DH-4 DRILL HOLE, estimated location

LEGAL DESCRIPTION:

PARCEL 1, IN THE CITY OF SANTA ANA, COUNTY OF ORANGE STATE OF CALIFORNIA, AS SHOWN ON THE MAP FILED IN BOOK 106, PAGE 43 OF PARCEL MAPS, RECORDS OF SAID COUNTY.

NOTE:

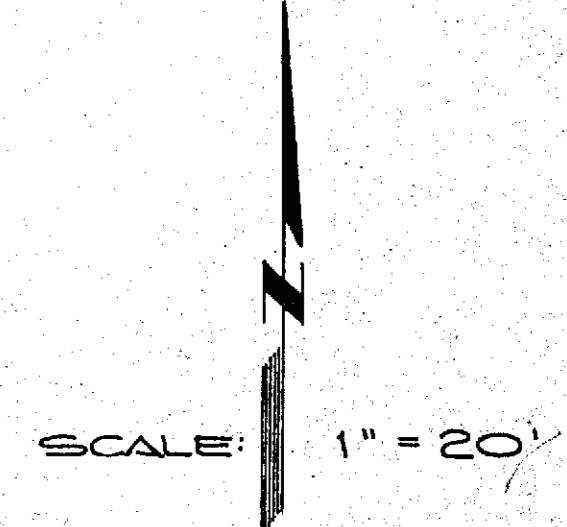
UNDERGROUND UTILITIES SHOWN HEREON ARE FOR INFORMATION ONLY HAVING BEEN OBTAINED FROM THE BEST AVAILABLE SOURCES, BUT FROM OTHERS NOT CONNECTED WITH THIS COMPANY, THEREFORE NO GUARANTEE IS MADE AS TO THE ACCURACY AND COMPLETENESS OF SAID INFORMATION.

BENCH MARK:

CITY OF SANTA ANA B.M. NO. 510 WELL MON. AT CENTERLINE INTERSECTION FAIRVIEW STREET AND GEGERSTROM AVENUE.
 ELEV. = 35.44

T.B.M.

CHISELED 'O' IN TOP OF CURB 5' W SIDE ALTON AVENUE AT CORNER 6' W. RETURN ALTON AVENUE AND FAIRVIEW STREET.
 ELEV. = 26.14



d.a.evans inc.
 engineering and geotechnical consultants in apparel and footwear
 23011 mountain parkway, suite 110
 laguna hills, california 92653
 (714) 776-8228

CADILLAC-FAIRVIEW/CALIFORNIA, INC.
GEOTECHNICAL MAP
 PLATE 2

JOB NUMBER 81-20-00 JUNE 12, 1981

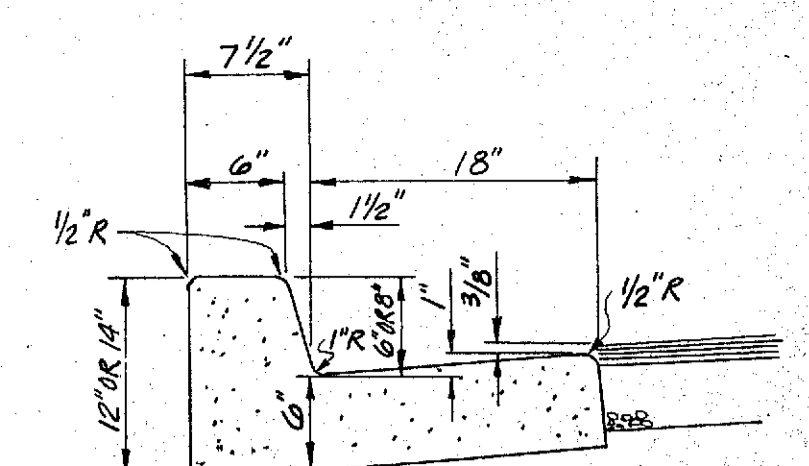
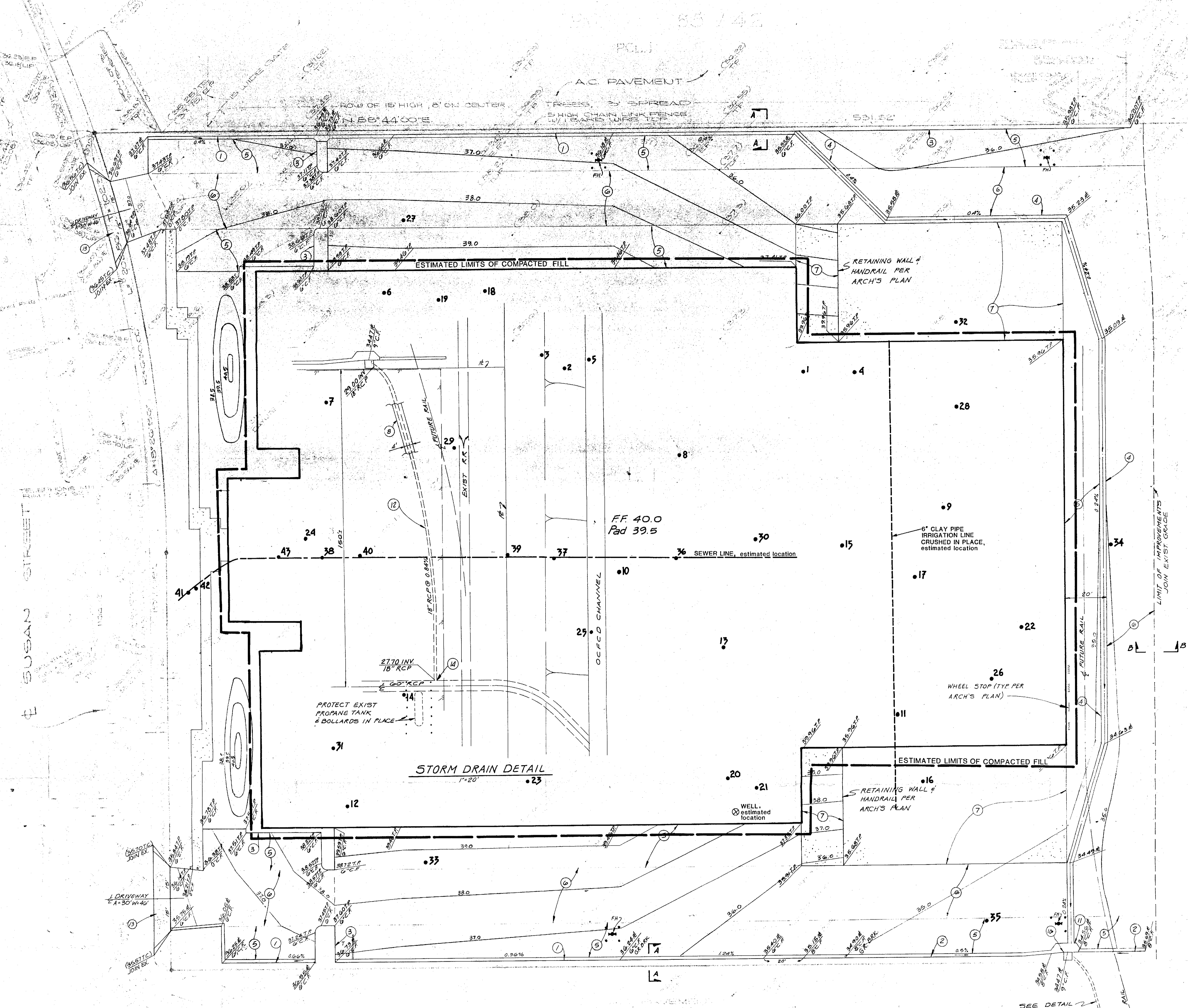
BOUNDARY AND TOPOGRAPHIC SURVEY FOR
CADILLAC FAIRVIEW, CALIFORNIA, INC.
 2200 W. ARTESIA BOULEVARD
 COMPTON, CALIFORNIA 90220
 PHONE (213) 657-0777

W S WILLIAMSON & SCHMID
 17782 SKY PARK BOULEVARD • IRVINE, CALIFORNIA 92714 • (714) 540-2222

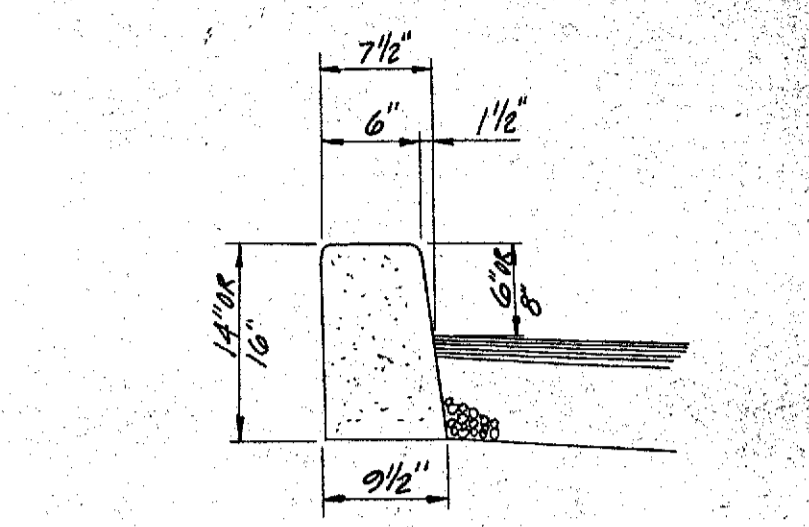
DESIGNED BY: K.Z.
 DRAWN BY: J.P.
 CHECKED BY: J.P.
 DATE: 11/19/81

APPROVED BY: [Signature]

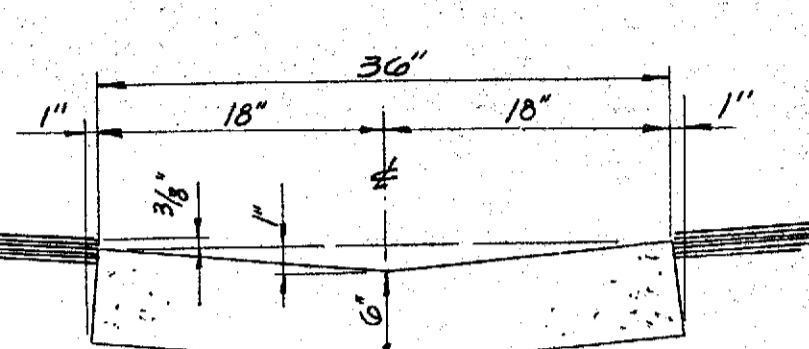
SHEET 1 OF 1
 SHEETS 25120



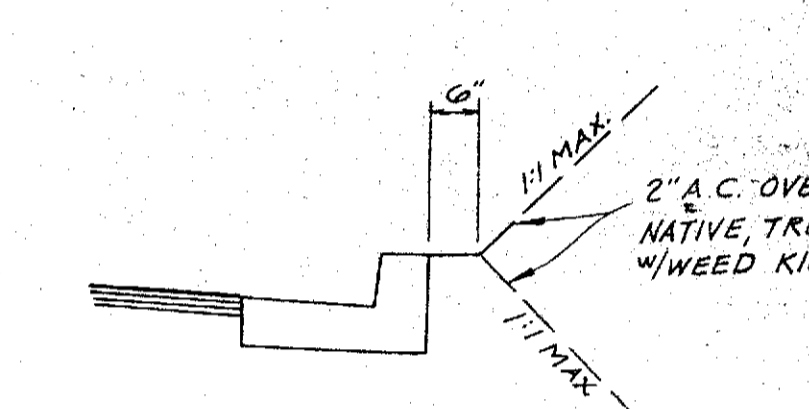
CONC. CURB & GUTTER



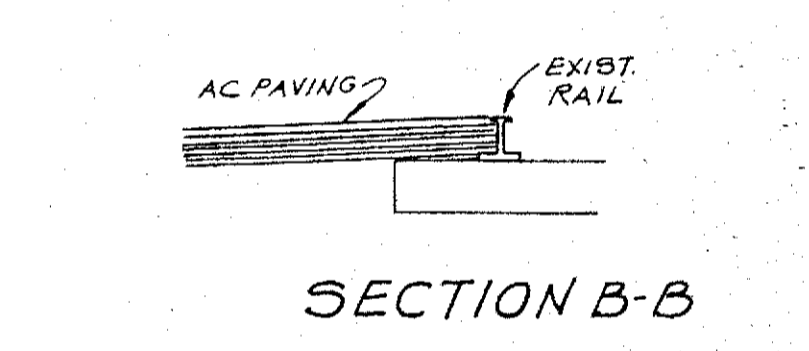
CONC. CURB



CONC. GUTTER



SECTION A-A

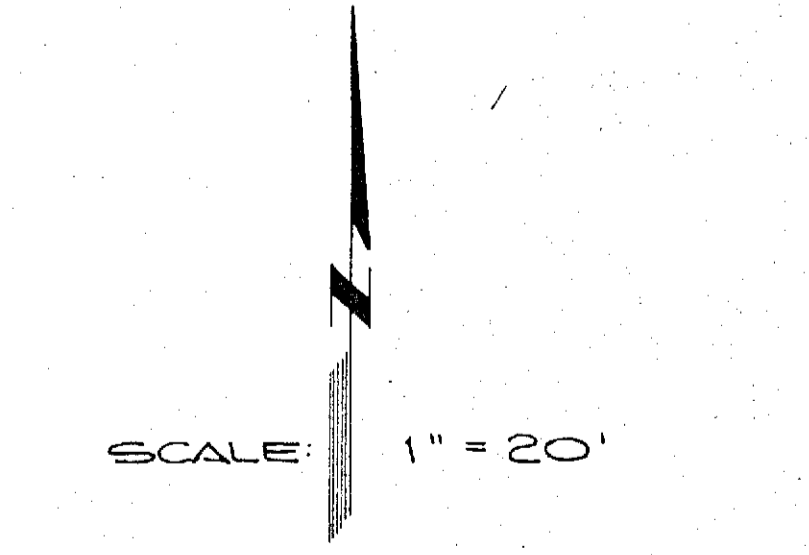


SECTION B-B

EARTHWORK ESTIMATE

5740 CUT	FILL	5030
1150 SKRINKAGE (20%)	SUBS(B)	960
4590	5990	
IMPORT 1400		

I.B.M.
CHISELED 'D' IN TOP OF CURB, 6" LY
SIDE ALTON AVENUE AT SUSAN
BLVD. RETURN ALTON AVENUE AND
FAIRVIEW STREET.
ELEV = 36.14



- CONSTRUCTION NOTES**
- 1 CONST 6" CURB & GUTTER PER DETAIL HEREON 630 LF
 - 2 CONST 8" CURB & GUTTER PER DETAIL HEREON 165 LF
 - 3 CONST 6" CURB ONLY 562 LF
 - 4 CONST 36" VEE GUTTER PER DETAIL HEREON 497 LF
 - 5 CONST 3" AC OVER 4" A.B. IN PARKING AREAS 3065 SF
 - * 6 CONST 3" AC OVER 5" A.B. IN DRIVEWAYS 32,839 SF
 - 7 CONST 4" CONC. OVER 4" A.B. 14270 SF
 - 8 REMOVE & REPLACE PAVEMENT IN KIND 620 SF
 - 9
 - 10 CONST CATCH BASIN PER CITY STD. 303 (W-3'6") 1 EA.
 - 11 CONST LOCAL DEPRESSION PER CITY STD. 305 1 EA.
 - 12 CONST 18" RCP D1250 154 LF
 - 13 CONST DRIVEWAY PER CITY STD. 112A (A-30', W-46') 648 SF
 - 14 CONNECT TO EXIST "W" CONC. COLLAR 1 EA.
- * TO BE VERIFIED AT COMPLETION OF ROUGH GRADING BY SOILS ENGINEER

EXPLANATION

•42 IN-PLACE DENSITY TEST estimated location

PRIVATE ENGINEER'S NOTICE TO CONTRACTORS

The existence and location of any underground utility pipes or structures shown on this plan are obtained by a search of available records. To the best of our knowledge there are no existing utilities except as shown on these plans. The contractor is required to take due precautionary measures to protect the utilities shown and any other lines or structures not shown on these plans.

All contractors and subcontractors performing work shown on or related to these plans shall conduct their operations so that all employees are provided a safe place to work and the public is protected. All contractors and subcontractors shall comply with the "Occupational Safety and Health Regulations" of the U.S. Department of Labor, and with the State of California Department of Industrial Relations' "Construction Safety Orders".

The civil engineer shall not be responsible in any way for the contractors' and subcontractors' compliance with the "Occupational Safety and Health Regulations" of the U.S. Department of Labor or with the State of California Department of Industrial Relations' "Construction Safety Orders".

Contractor further agrees that he shall assume sole and complete responsibility for job site conditions during the course of construction of this project, including safety of all persons and property; that this requirement shall apply continuously and not be limited to normal working hours; and that the contractor shall defend, indemnify and hold the owner and the engineer harmless from any and all liability, real or alleged, in connection with the performance of work on this project, excepting for liability arising from the sole negligence of the owner or the engineer.

SOILS ENGINEER
D.A. EVANS
23011 MOULTON PARKWAY
LAGUNA HILLS, CA. 92653
(714) 770-8528

OWNER
CADILLAC FAIRVIEW/CAL.
2200 W. ARTESIA BL.
COMPTON, CA. 90220
(213) 637-0777

WILLIAMSON & SCHMID
ENGINEERING AND ARCHITECTS
23011 MOULTON PARKWAY, SUITE 110
LAGUNA HILLS, CALIFORNIA 92653
(714) 770-8528

d.a. evans inc.
ENGINEERING AND ARCHITECTS
23011 MOULTON PARKWAY, SUITE 110
LAGUNA HILLS, CALIFORNIA 92653
(714) 770-8528

CADILLAC FAIRVIEW/CALIFORNIA, INC.

PLOT PLAN
PLATE 1

Job Number 81-20-10 October 9, 1981

DRS/KRS	1
DRS	1
JEL	1
DATE PLOTTED	7-78
SHEET NO.	64120